

# PACIFIC BUSINESS PARK SOUTH

11,849 Sq. Ft.  
Industrial/Warehouse  
Space For Lease

12207 - 12239 N.E. Marx St. 

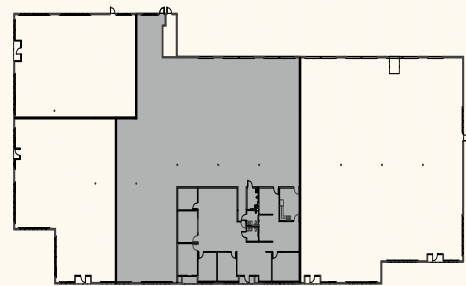
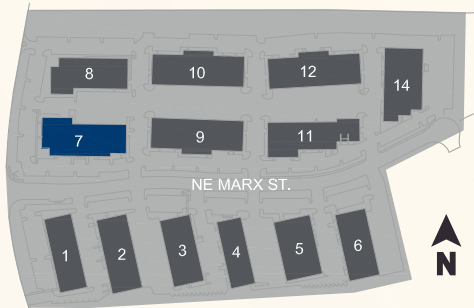
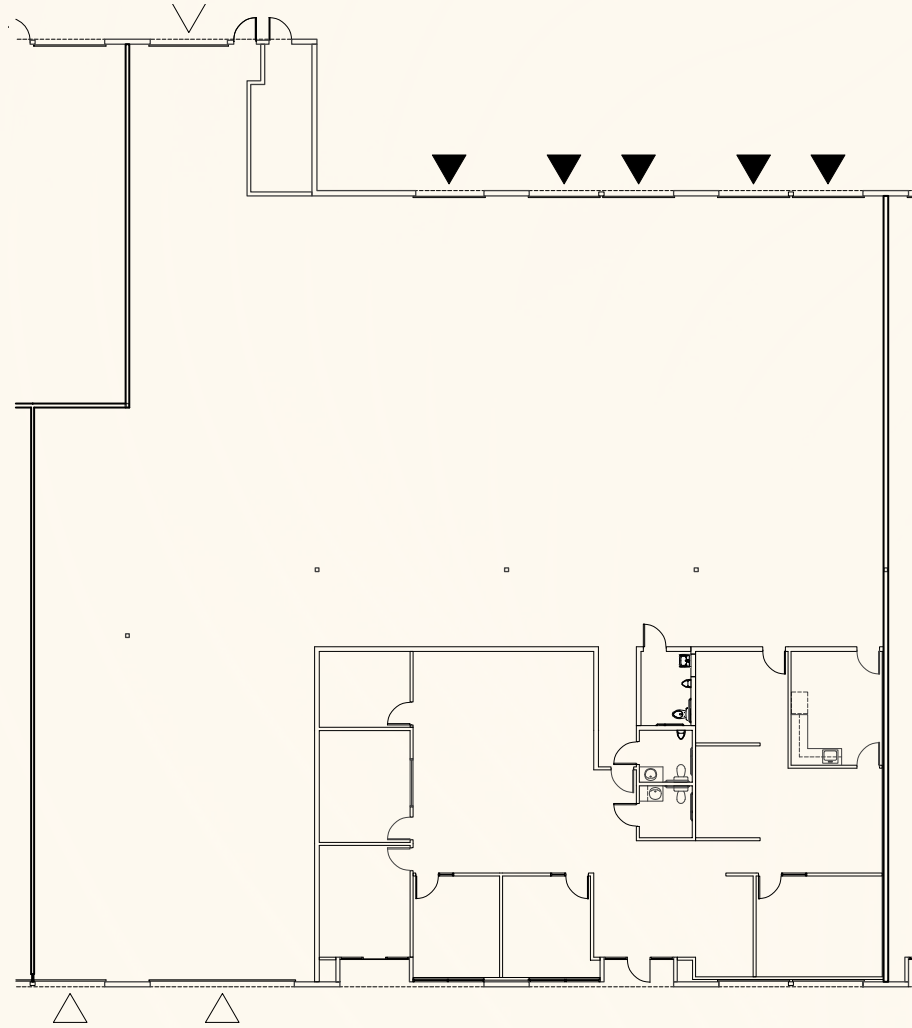
12225 NE Marx Street, Portland, OR 97220

**PACTRUST**

### Space Plan | 14' Clear Height

**PACTRUST**

- ▲ Dock Access
- △ Grade Access



**Building Plan**

Building 7



## Key Features



11,849 sq. ft shell



3,251 sq. ft. office



5 dock doors  
3 grade doors

LED lighting

Exposure on 122nd Ave

Excellent access to Interstates 8  
and 205

2.7 miles to PDX International  
Airport

### Lease Rate:

**\$0.90/sq. ft. shell**

**\$1.10/sq. ft. office**

**NNN Lease**

Suite 12225



# Leasing Contacts

Owned & Managed by

**PacTrust**

Pacific Business Park South  
Industrial/Warehouse Space For Lease

12225 NE Marx Street  
Portland, OR 97230

Jake Bigby

jakeb@pactrust.com

Caitlin Knecht

caitlink@pactrust.com

503.624.6300

www.pactrust.com

